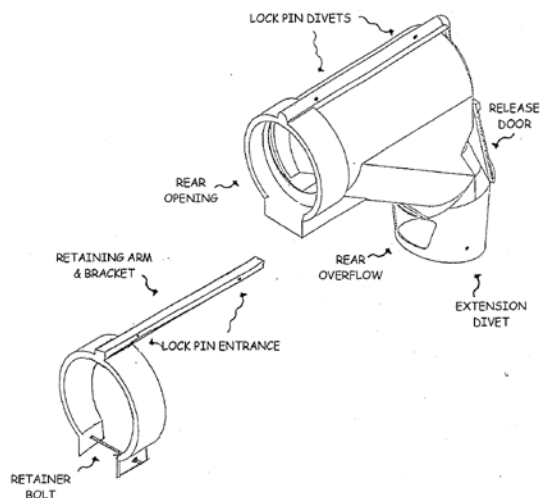


FC4-U08 Auger Spout Installation Manual

FC4-U AUGER SPOUT



1. The inlet hole of the auger spout is pre-cut at 12 $\frac{1}{2}$ " to fit smaller augers. If auger is 14" O.D. a guide to follow is marked on the plastic, and if auger is larger than 14" cut to full diameter. Cut hole to correct size by using a router, jigsaw, or sharp utility knife.
2. Position retaining arm and bracket on auger and tighten bolt to hold in place. The retaining arm and bracket may be positioned to extend the auger, but if grain was to come out the safety door during operation you may have to move the bracket in closer to the combine to deflect grain downwards. With combines that discharge directly from the end of the auger, insure that the spout is out far enough to avoid restricting grain flow.
3. Now that retaining arm and bracket is in place slide the spout on until the retaining arm and bracket is covered over with plastic. Insert lock pins into indicated holes and latch. If combine auger has a spill saver you may have to vertically cut the plastic on the rear opening to allow entrance. By cutting vertically only, the plastic can be held in place and used as a shield.
4. To assemble extensions, drill $\frac{1}{4}$ " holes in the marks on the spout and extensions to be used. Install elevator bolts from the inside out of both the spout and extensions, then secure in place with a fender washer and flange nut. Install straps and locknuts to the spout extensions and tighten securely. Install spout extensions to spout and secure with nuts.



Retaining Arm and Bracket: the retaining bracket supports the arm as well as holding spout on to auger. The arm portion supports the weight of the spout so it can be placed in various positions on the auger.

Pressure Release Door: if the spout was to come into contact with the grain in a truck box or cart causing the flow of grain to reverse there would be an initial warning of grain escaping through the rear overflow, and if necessary, the pressure release door would open and allow the remainder of the flow to escape preventing damage to the gear box, flying, and shear pin of the combine auger.

***THE DESIGN OF THE FLOW CONTROL AUGER SPOUT IS INTENDED TO PROTECT THE UNLOADING SYSTEM MOMENTARILY SHOULD THE DISCHARGE BECOME BLOCKED AND IS NOT INTENDED TO OPERATE IN THE OVERFLOW MODE FOR EXTENDED PERIODS. CALMAR INDUSTRIES LTD. IS NOT RESPONSIBLE FOR ANY DAMAGE TO THE COMBINE DUE TO OPERATOR ERROR OR NEGLIGENCE.**

Additional Instructions

For installation on the new Case or New Holland combines with the open end auger and spill saver the following are tips provided to us by one of our dealers:

- Install the retaining arm and bracket up against the welded brace on the underside of auger.
- After cutting out rear opening notch out plastic to allow spout to slide over welded brace on end of auger.
- Drill two new holes 2" back to the spout rear opening for lock pins.
- Cut grain saver to fit inside of new spout.
- Slide spout on to auger then bolt the bolt saver in from the inside through end of spout.
- Push auger all the way on and install retainer pins.
- Cut foam block removed from original spout to fit in lower box on back of new spout.

LIMITED WARRANTY

Calmar Industries Ltd. (Calmar) warrants to the original consumer purchase (Purchaser") of equipment, manufactured by it, that the products are free from defects in material or workmanship.

If, within TWELVE (12) months from the date of purchase, any such product shall prove to be defective, it shall be repaired or replaced at Calmar's option, subject to the terms and conditions set forth below.

GENERAL TERMS AND CONDITIONS

PURCHASER MUST PAY ALL LABOUR AND SHIPPING CHARGES NECESSARY TO REPLACE A PRODUCT COVERED BY THIS WARRANTY. THIS WARRANTY SHALL NOT APPLY TO ANY PRODUCT THAT HAS BEEN SUBJECT TO NEGLIGENCE, MISAPPLICATION, IMPROPER INSTALLATION OR MAINTENANCE, OR OTHER CIRCUMSTANCES BEYOND CALMAR'S CONTROL.

REQUESTS FOR SERVICE UNDER THIS WARRANTY SHALL BE MADE BY CONTACTING THE INSTALLING CALMAR DEALER AS SOON AS POSSIBLE AFTER THE DISCOVERY OF ANY ALLEGED DEFECT. CALMAR WILL SUBSEQUENTLY TAKE CORRECTIVE ACTION AS PROMPTLY AS REASONABLY POSSIBLE. NO REQUESTS FOR SERVICE UNDER THIS WARRANTY WILL BE ACCEPTED IF RECEIVED MORE THAN 30 DAYS AFTER THE TERM OF THE WARRANTY.

THIS WARRANTY SETS FORTH CALMAR'S SOLE OBLIGATION AND PURCHASER'S EXCLUSIVE REMEDY FOR DEFECTIVE PRODUCTS.

CALMAR SHALL NOT BE LIABLE FOR ANY CONSEQUENTIAL INCIDENTAL OR CONTINGENT DAMAGES WHATSOEVER.

THE FOREGOING WARRANTIES ARE EXCLUSIVE AND IN LIEU OF ALL OTHER WARRANTIES, EXPRESSED OR IMPLIED, INCLUDING BUT NOT LIMITED TO THE IMPLIED WARRANTIES OF MERCHANTABILITY AND FITNESS FOR A PARTICULAR PURPOSE, SHALL NOT EXTEND BEYOND THE DURATION OF THE APPLICABLE WARRANTIES PROVIDED HEREIN.

For more information write or call:

CALMAR INDUSTRIES LTD.
602B - 51 ST STREET EAST SASKATOON SK S7K 7K3
PH: (306) 975-1999 FAX: (306) 975-7175