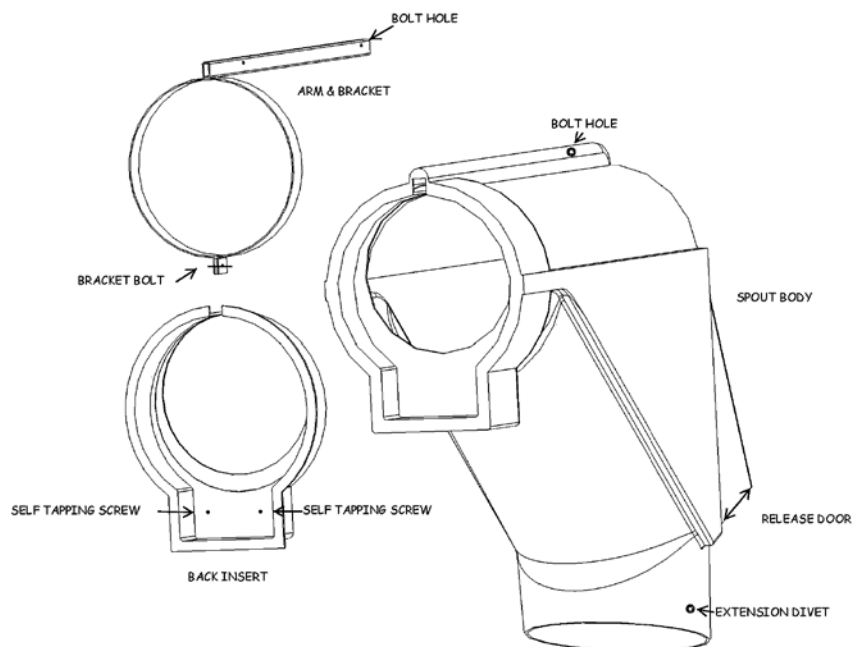


# FC4-U09 Auger Spout Installation Manual

1. Remove existing auger spout from combine but leave your spill saver in place. (On John Deere models with the 17" high unload auger remove all bolts except the ones holding the flying shaft in place. Cut off extra threads or remove the two bolts positioned at approximately four and eight o'clock replacing with shorter nuts and bolts supplied.)



2. Place the Arm and Bracket on to the auger with arm pointing away from combine but do not tighten nut and bolt. The Arm and Bracket support and attach spout to auger and also allow various positions. The Bracket is adjustable from 14" to 17".
3. Place the Back Insert on to the auger by spreading the opening slightly and sliding up to the Arm and Bracket.
4. Slide the spout body on to the auger and over bracket arm until approximately 18" from auger end. This may have to be adjusted depending on whether you have an end or bottom discharge auger or if grain hits and opens the pressure release door.
5. Slide Back Insert completely into back end of Spout body and then slide Arm and Bracket into back end of Insert. You can now tighten bolt to hold the Bracket in place. The Insert is precut at 14" and marked for the 17" size. If you have the 17" auger simply cut along marking to allow for the larger auger.
6. Insert bolt through Spout Body and through Arm and secure with locknut supplied.
7. The Back Insert should be secured in place against the Spout Body by the bracket, but supplied self tapping screws can be drilled through Spout Body into Back Insert too hold in place.
8. To assemble extensions, drill  $\frac{1}{4}$ " holes in the marks on the spout and extensions to be used. Install elevator bolts from the inside out of both the spout and extensions, then secure in place with a fender washer and flange nut. Install straps and locknuts to the spout extensions and tighten securely. Install spout extensions to spout and secure with nuts.



**\*THE DESIGN OF THE FLOW CONTROL AUGER SPOUT IS INTENDED TO PROTECT THE UNLOADING SYSTEM MOMENTARILY SHOULD THE DISCHARGE BECOME BLOCKED AND IS NOT INTENDED TO OPERATE IN THE OVERFLOW MODE FOR EXTENDED PERIODS. CALMAR INDUSTRIES LTD. IS NOT RESPONSIBLE FOR ANY DAMAGE TO THE COMBINE DUE TO OPERATOR ERROR OR NEGLIGENCE.**

## LIMITED WARRANTY

Calmar Industries Ltd. (Calmar) warrants to the original consumer purchase (Purchaser") of equipment, manufactured by it, that the products are free from defects in material or workmanship.

If, within TWELVE (12) months from the date of purchase, any such product shall prove to be defective, it shall be repaired or replaced at Calmar's option, subject to the terms and conditions set forth below.

### GENERAL TERMS AND CONDITIONS

PURCHASER MUST PAY ALL LABOUR AND SHIPPING CHARGES NECESSARY TO REPLACE A PRODUCT COVERED BY THIS WARRANTY. THIS WARRANTY SHALL NOT APPLY TO ANY PRODUCT THAT HAS BEEN SUBJECT TO NEGLIGENCE, MISAPPLICATION, IMPROPER INSTALLATION OR MAINTENANCE, OR OTHER CIRCUMSTANCES BEYOND CALMAR'S CONTROL.

REQUESTS FOR SERVICE UNDER THIS WARRANTY SHALL BE MADE BY CONTACTING THE INSTALLING CALMAR DEALER AS SOON AS POSSIBLE AFTER THE DISCOVERY OF ANY ALLEGED DEFECT. CALMAR WILL SUBSEQUENTLY TAKE CORRECTIVE ACTION AS PROMPTLY AS REASONABLY POSSIBLE. NO REQUESTS FOR SERVICE UNDER THIS WARRANTY WILL BE ACCEPTED IF RECEIVED MORE THAN 30 DAYS AFTER THE TERM OF THE WARRANTY.

THIS WARRANTY SETS FORTH CALMAR'S SOLE OBLIGATION AND PURCHASER'S EXCLUSIVE REMEDY FOR DEFECTIVE PRODUCTS.

CALMAR SHALL NOT BE LIABLE FOR ANY CONSEQUENTIAL INCIDENTAL OR CONTINGENT DAMAGES WHATSOEVER.

THE FOREGOING WARRANTIES ARE EXCLUSIVE AND IN LIEU OF ALL OTHER WARRANTIES, EXPRESSED OR IMPLIED, INCLUDING BUT NOT LIMITED TO THE IMPLIED WARRANTIES OF MERCHANTABILITY AND FITNESS FOR A PARTICULAR PURPOSE, SHALL NOT EXTEND BEYOND THE DURATION OF THE APPLICABLE WARRANTIES PROVIDED HEREIN.

For more information write or call:

CALMAR INDUSTRIES LTD.  
602B - 51 ST STREET EAST SASKATOON SK 57K 7K3  
PH: (306) 975-1999 FAX: (306) 975-7175